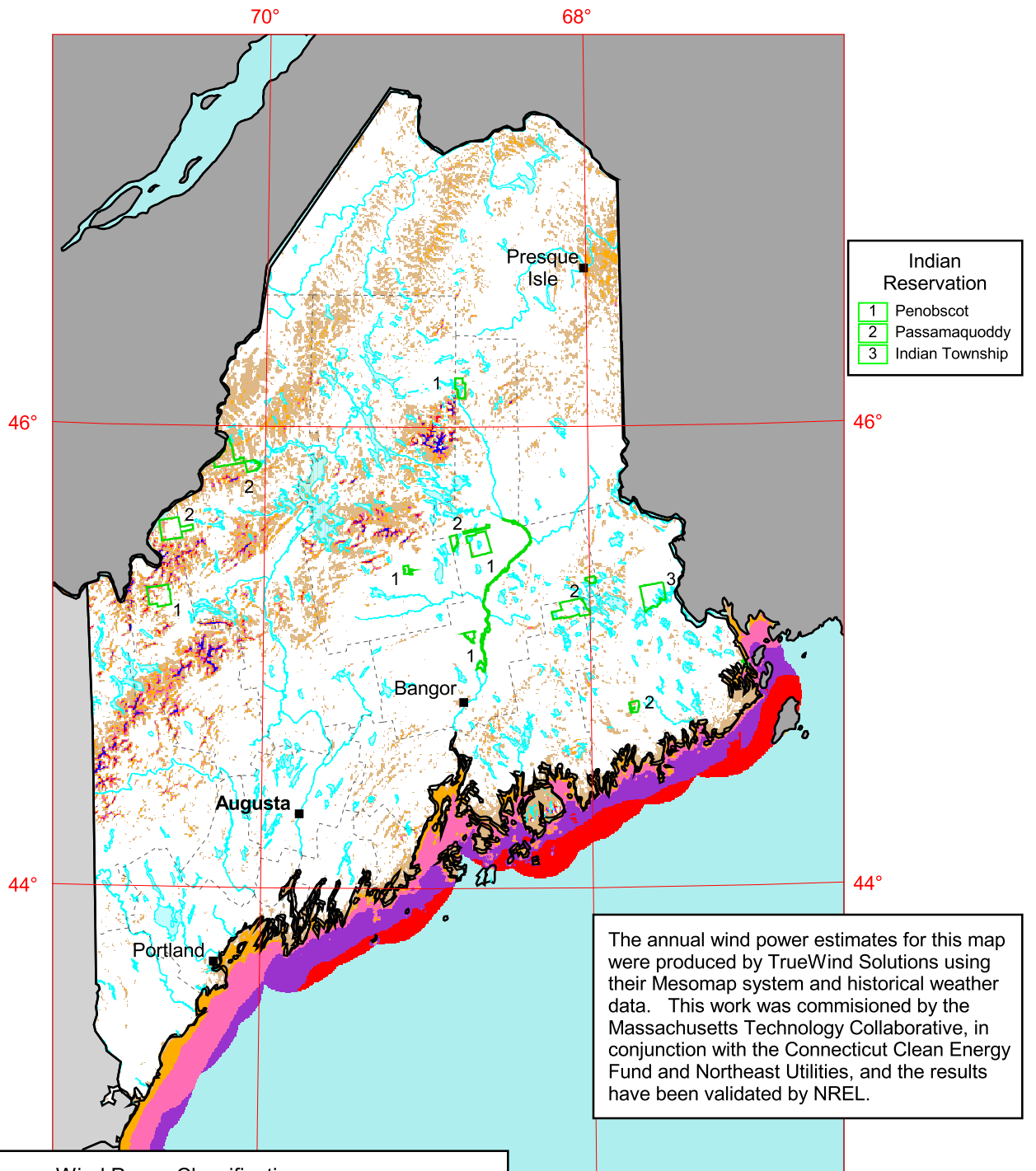


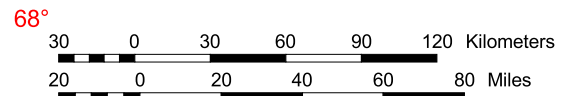
# Maine - 50 m Wind Power



## Wind Power Classification

Wind Power Class	Resource Potential	Wind Power Density at 50 m $W/m^2$	Wind Speed <sup>a</sup> at 50 m m/s	Wind Speed <sup>a</sup> at 50 m mph
1	Poor	0 - 200	0.0 - 5.6	0.0 - 12.5
2	Marginal	200 - 300	5.6 - 6.4	12.5 - 14.3
3	Fair	300 - 400	6.4 - 7.0	14.3 - 15.7
4	Good	400 - 500	7.0 - 7.5	15.7 - 16.8
5	Excellent	500 - 600	7.5 - 8.0	16.8 - 17.9
6	Outstanding	600 - 800	8.0 - 8.8	17.9 - 19.7
7	Superb	> 800	> 8.8	> 19.7

<sup>a</sup> Wind speeds are based on a Weibull k value of 2.0



U.S. Department of Energy  
National Renewable Energy Laboratory



06-FEB-2007 1.1.4