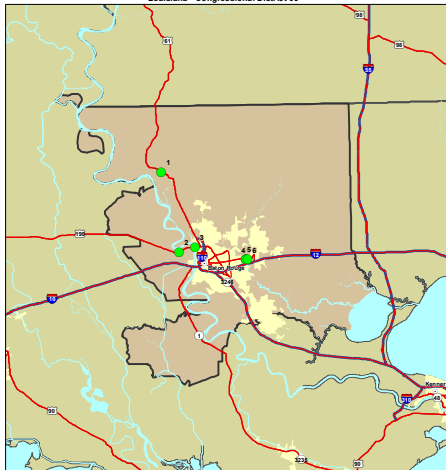




## Structurally Deficient Bridges on the National Highway System Louisiana - Congressional District 06



Consult your state DOT for the most up-to-date status of bridges.

Area of Detail



Note: The bridges displayed on this map represent the results of a combined BTS/FHWA effort to geocode bridges from the FHWA's National Bridge Inventory (NBI). With the exception of Kentucky and Pennsylvania, whose most current data is 2006, all data is from the 2007 NBI. Of the 90 structurally deficient NHS bridges in Louisiana, 3 could not be geolocated because of insufficient data. Structurally deficient bridges are not necessarily unsafe; all public road bridges receive regular safety inspections. The bridges listed were categorized as structurally deficient at the time the maps were developed.

Bridge Label	Structure ID	Bridge Description	Location Description
1	616300190403141	US0061	61630190403141
2	616100080102931	US0190	US0190
3	611700071000001	US0190	US0190
4	623200130600001	US0190	62320130600001
5	623200130600002	US0190	62320130600002
6	623200130600431	US0190	62320130600431