

FLOOD AFFECTED AREAS ALONG PAMPANGA RIVER, NUEVA ECIJA PROVINCE, PHILIPPINES

Analysis with FORMOSAT-2 data acquired on 30 Sept. 2009

Disaster coverage by the International Charter 'Space and Major Disasters'. For more information on the Charter, which is about assisting the disaster relief organizations with multi-satellite data and information, visit www.disasterscharter.org



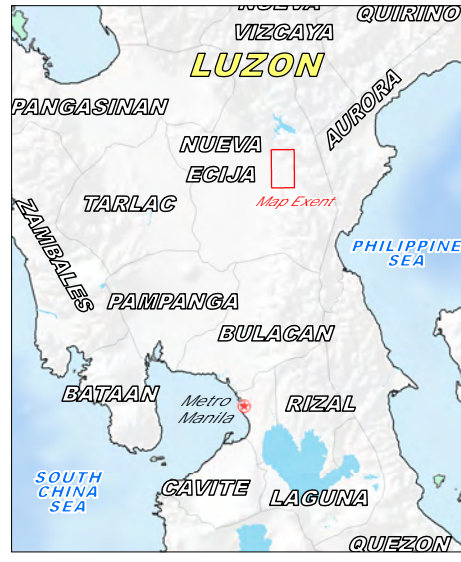
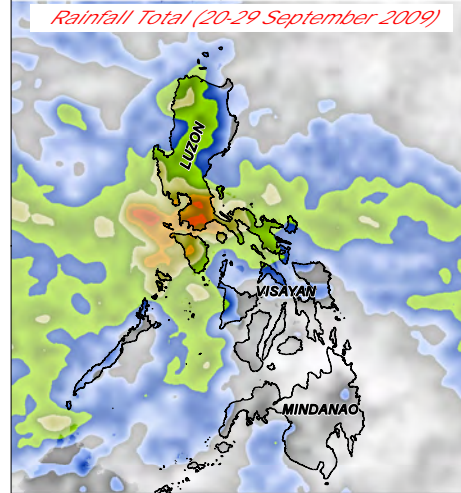
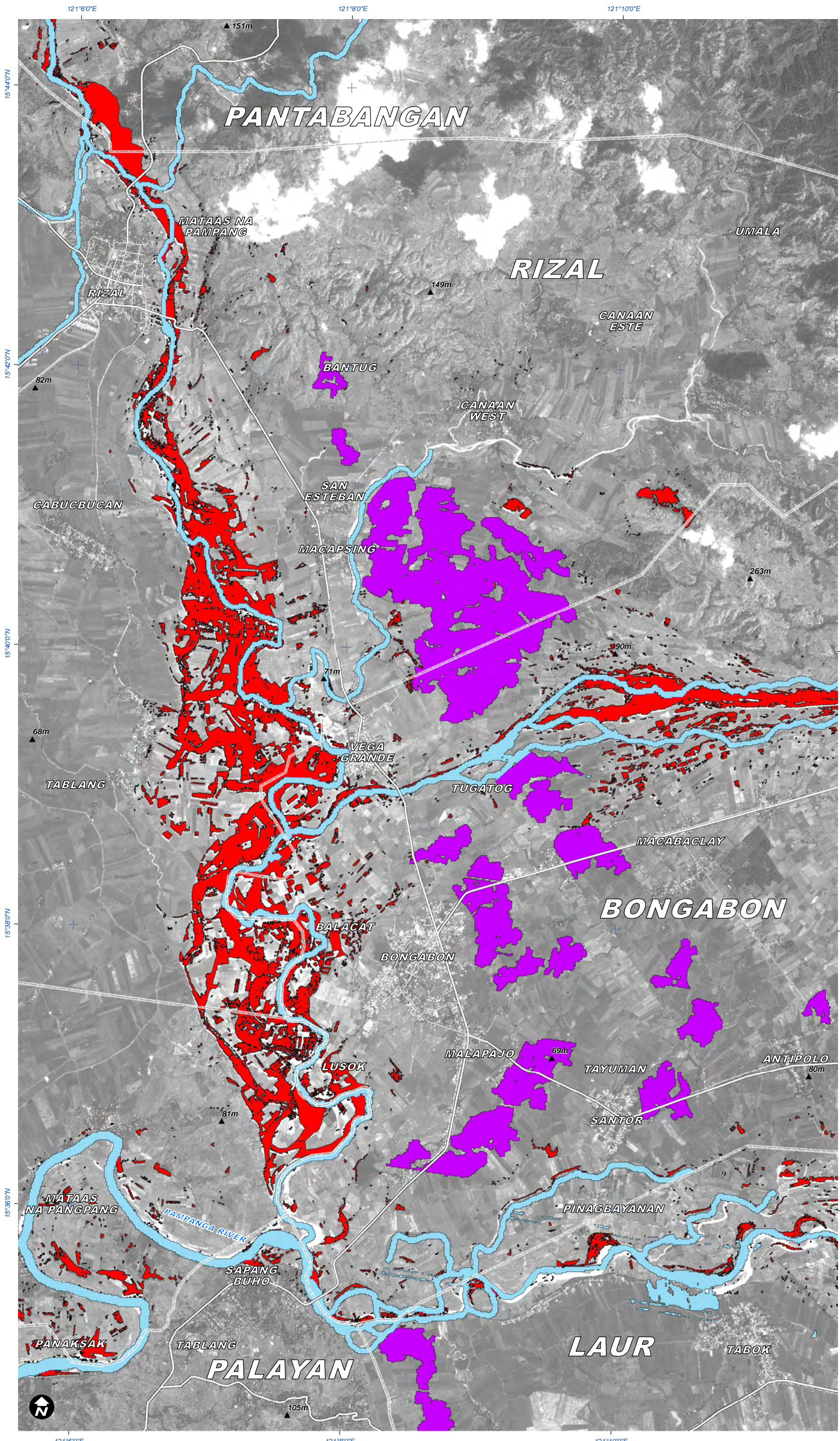
Tropical Cyclone

7 October 2009



Version 1.0

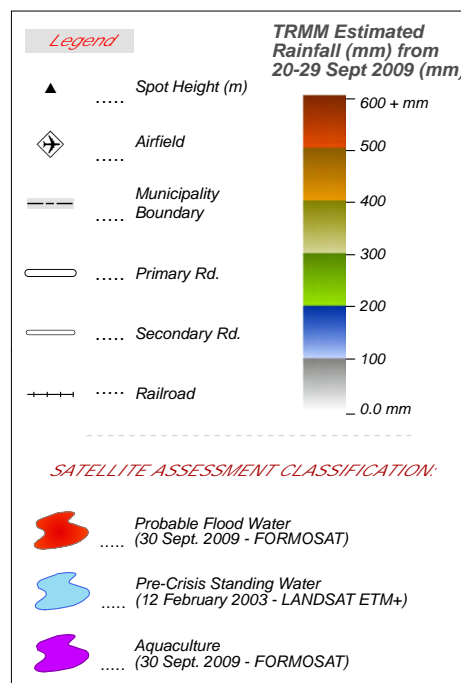
Glide No: TC-2009-000205-PHL



Legend

This map illustrates satellite-detected areas likely affected by flood water in Nueva Ecija Province, Philippines, as based on change detection methods using FORMOSAT-2 data acquired over the area on 30 September 2009 and LANDSAT ETM+ data acquired on 12 February 2003. The newly released ASTER global elevation model (GDEM) was also used in the flooding analysis. This flood assessment is a preliminary analysis & has not yet been validated in the field.

The depiction and use of boundaries, geographic names and related data shown here are not warranted to be error-free nor do they imply official endorsement or acceptance by the United Nations. UNOSAT is a program of the United Nations Institute for Training and Research (UNITAR), providing satellite imagery and related geographic information, research and analysis to UN humanitarian & development agencies & their implementing partners.



Map Scale for A3: 1:50,000

0 0.5 1 2 Kilometers

Satellite Data (1) FORMOSAT-2
 Imagery Dates 30 September 2009
 Resolution 2 m
 Copyright NSPO (2009)
 Elevation Data ASTER GDEM
 Resolution 27m
 Source METI & NASA 2009
 Rainfall Data TRMM (NASA)
 Road Data Google Map Maker 2009
 Other Data OSM, ESRI, USGS, NGA
 Flood Analysis UNITAR / UNOSAT
 Map Production UNITAR / UNOSAT
 Projection UTM Zone 51 North
 Datum WGS-84

Map Data © 2009 Google - Improve with Google Map Maker

UNOSAT

Contact Information: unosat@unitar.org
 24/7 Hotline: +41 76 487 4998
www.unosat.org