

FLOOD AFFECTED AREAS IN METRO MANILA REGION AND RIZAL PROVINCE, PHILIPPINES

Analysis with RADARSAT-2 data acquired on 28 Sept. 2009

This map illustrates satellite-detected areas likely affected by flood water in Metro Manila Region and Rizal Province, Philippines, as based on change detection methods using RADARSAT-2 data acquired over the area on 28 September 2009 and ESRI data from 2007. The newly released ASTER global elevation model (GDEM) was also used in the flooding analysis. This flood assessment is a preliminary analysis & has not yet been validated in the field.

Disaster coverage by the International Charter 'Space and Major Disasters'. For more information on the Charter, which is about assisting the disaster relief organizations with multi-satellite data and information, visit www.disasterscharter.org



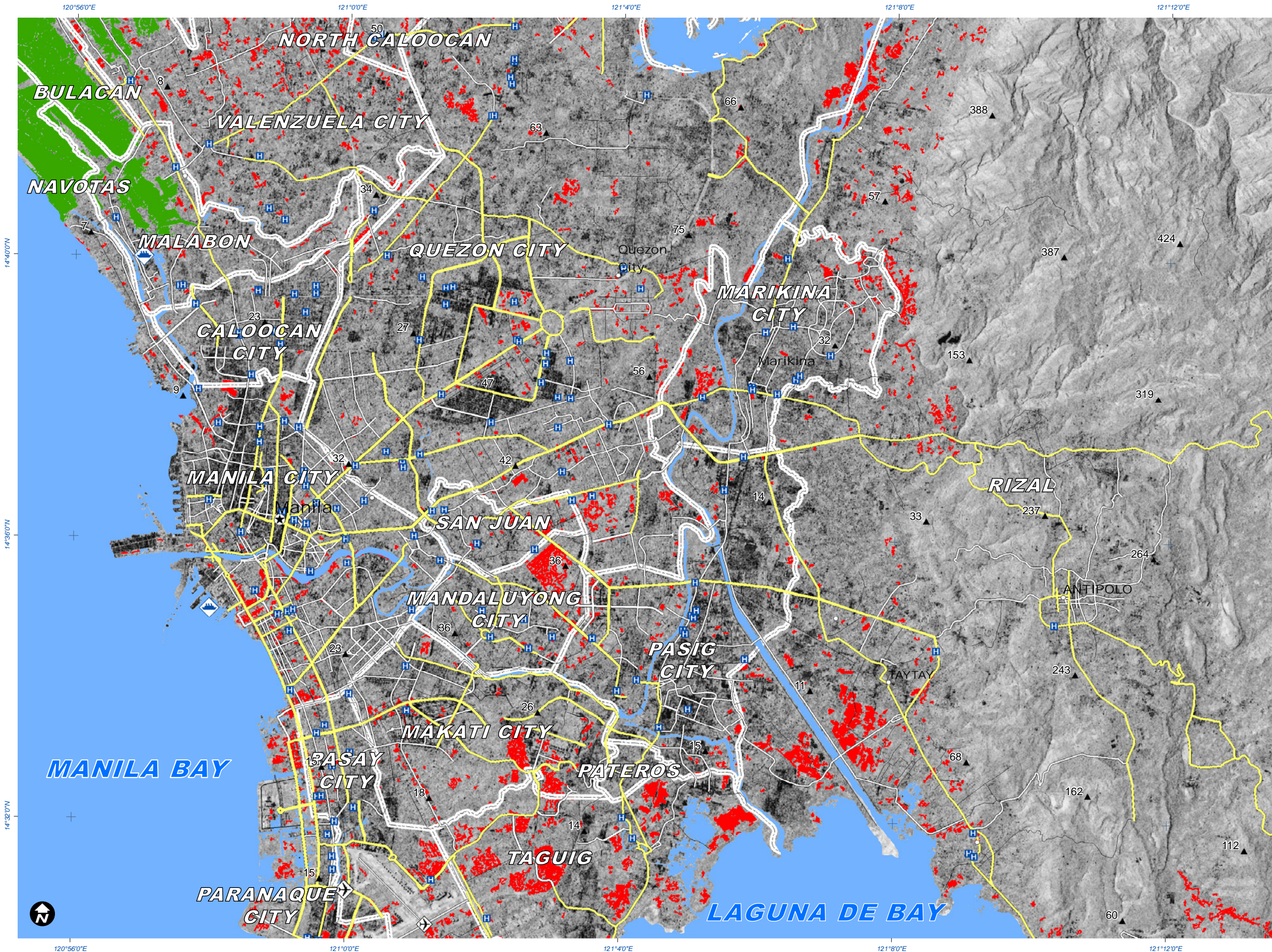
Tropical Cyclone

29 September 2009



Version 1.0

Glide No: TC-2009-000205-PHL



Legend

⊙	Capital	—	Local Government
○	Major city	—	Primary Rd.
✈	Airfield	—	Secondary Rd.
⚓	Port	—	Tertiary Rd.
H	Hospital	—	Railroad
▲	Spot Height (m)		

SATELLITE ASSESSMENT CLASSIFICATION:

- Possible Flood Water / Flood Affected Area (28 Sept. 2009 - RADARSAT-2)
- Pre-Crisis Standing Water (ESRI-2007)
- Agricultural Field (28 Sept. 2009 - RADARSAT-2)

Map Scale for A3: 1:100'000

0 0.5 1 2 3 4 Kilometers

Satellite Data (1) RADARSAT-2
 Imagery Dates 28 September 2009
 Resolution 3 m
 Copyright RADARSAT-2 @ MDA 2009
 Credit Canadian Space Agency
 Elevation Data ASTER GDEM
 Resolution 27m
 Source METI & NASA 2009
 Other Data OSM, ESRI, USGS, NGA
 Flood Analysis UNITAR / UNOSAT
 Map Production UNITAR / UNOSAT
 Projection UTM Zone 51 North
 Datum WGS-84

The depiction and use of boundaries, geographic names and related data shown here are not warranted to be error-free nor do they imply official endorsement or acceptance by the United Nations. UNOSAT is a program of the United Nations Institute for Training and Research (UNITAR), providing satellite imagery and related geographic information, research and analysis to UN humanitarian & development agencies & their implementing partners.

unitar
United Nations Institute for Training and Research

UNOSAT

Contact Information: unosat@unitar.org
 24/7 Hotline: +41 76 487 4998
www.unosat.org