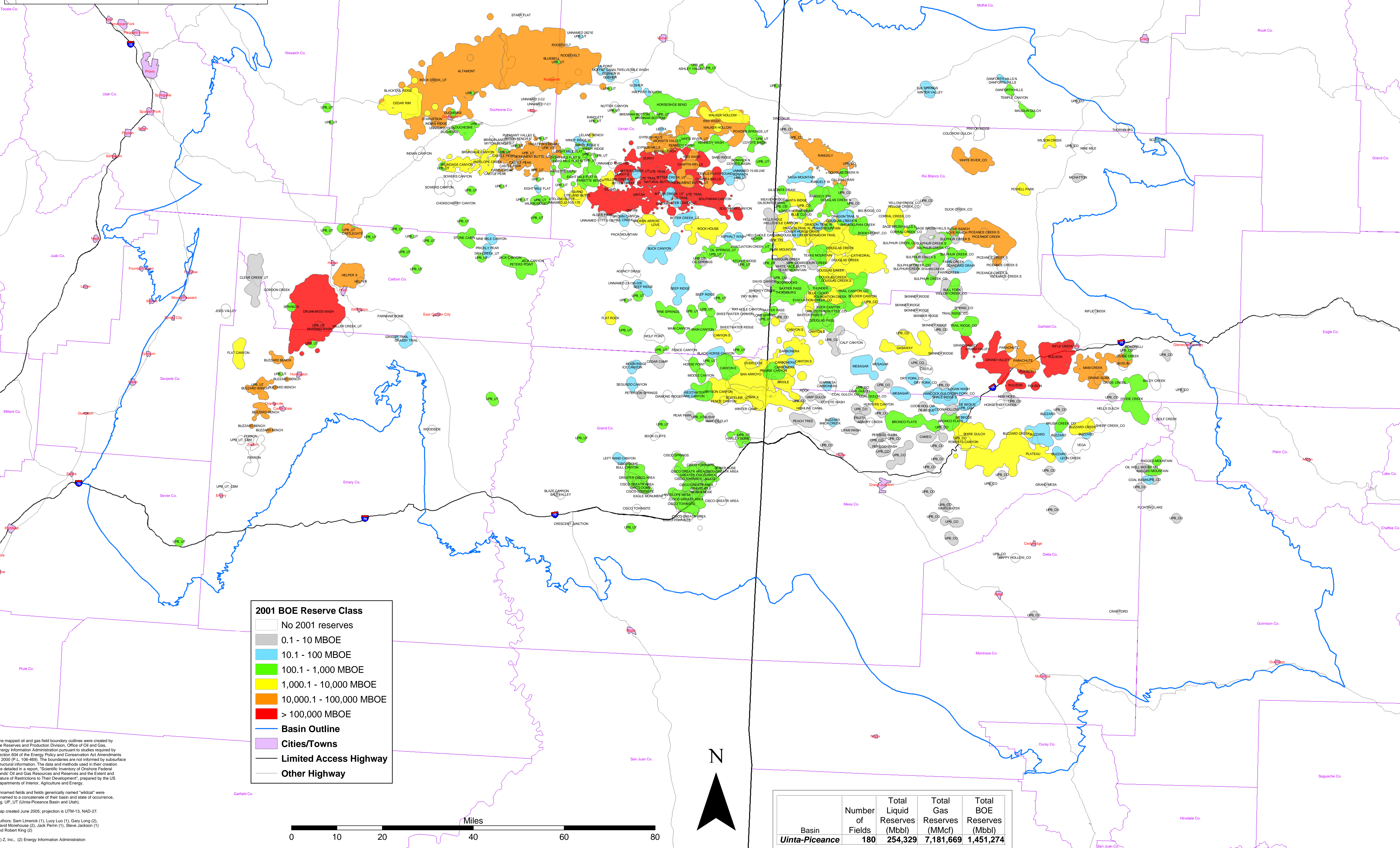
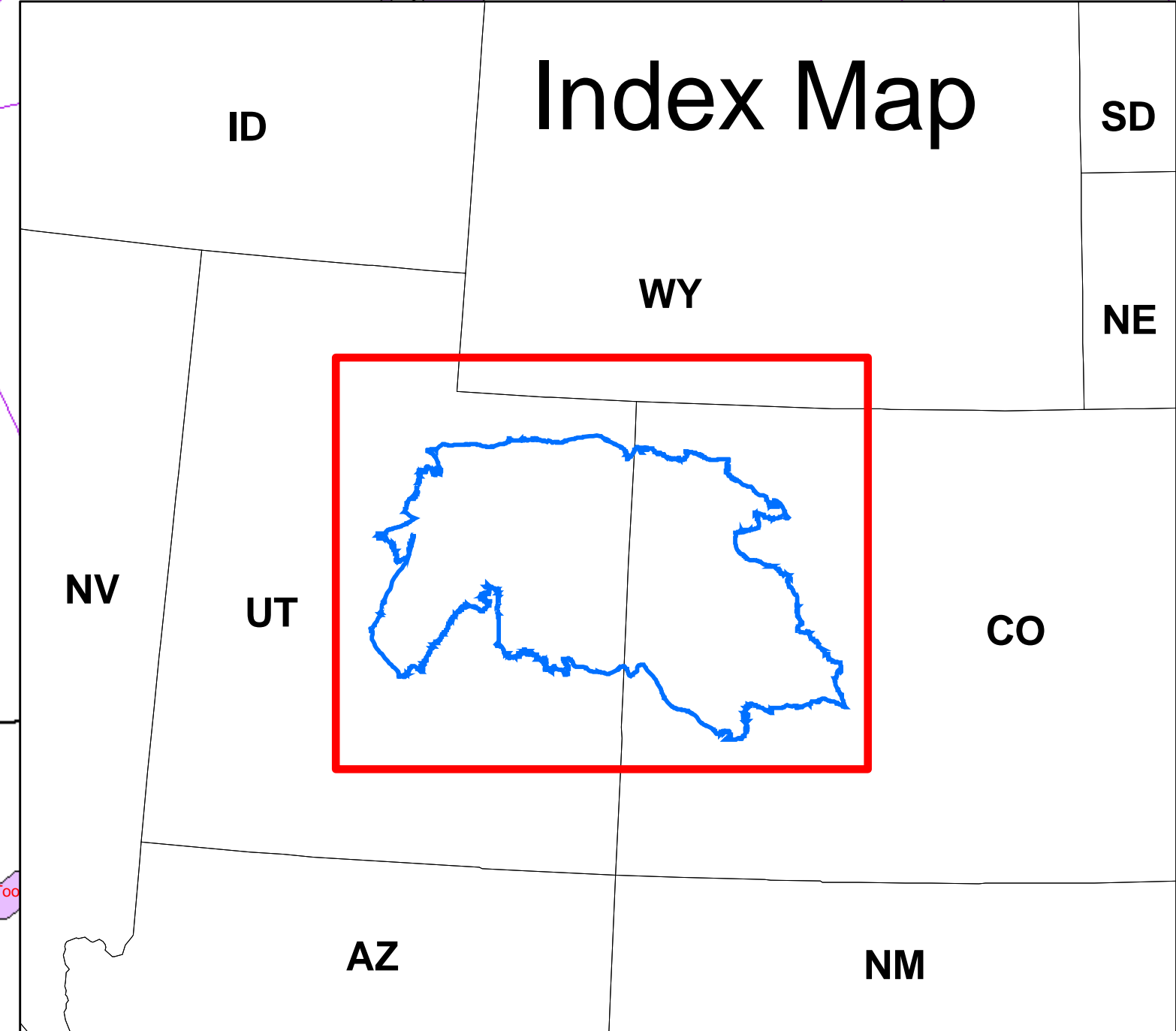


Uinta-Piceance Basin Oil & Gas Fields By 2001 BOE Reserve Class



2001 BOE Reserve Class

- No 2001 reserves
- 0.1 - 10 MBOE
- 10.1 - 100 MBOE
- 100.1 - 1,000 MBOE
- 1,000.1 - 10,000 MBOE
- 10,000.1 - 100,000 MBOE
- > 100,000 MBOE
- Basin Outline
- Cities/Towns
- Limited Access Highway
- Other Highway

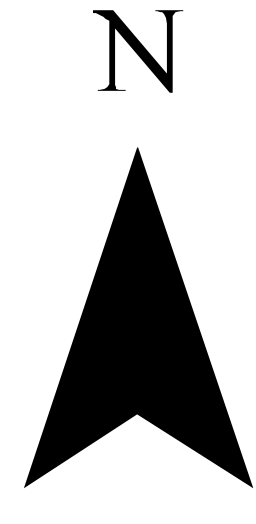
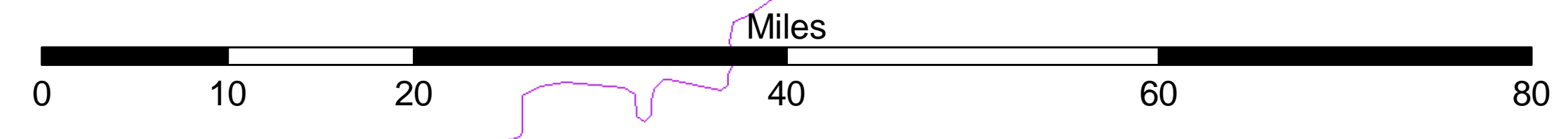
The mapped oil and gas field boundary outlines were created by the Reserves and Production Division, Office of Oil and Gas, Energy Information Administration pursuant to studies required by Section 604 of the Energy Policy and Conservation Act Amendments of 2000 (P.L. 106-468). The boundaries are not informed by subsurface structural information. The data and methods used in their creation are detailed in a report, "Scientific Inventory of Onshore Federal Lands' Oil and Gas Resources and Reserves and the Extent and Nature of Restrictions to Their Development", prepared by the US Departments of Interior, Agriculture and Energy.

Unnamed fields and fields generically named "wildcat" were renamed to a composite of their basin and state of occurrence, e.g. UP_UT (Uinta-Piceance Basin and Utah).

Map created June 2005; projection is UTM-13, NAD-27.

Authors: Sam Limerick (1), Lutz Luo (1), Gary Long (2), David Morehouse (2), Jack Perrin (1), Steve Jackson (1) and Robert King (2).

(1) Z. Inc., (2) Energy Information Administration



Basin	Number of Fields	Total Liquid Reserves (Mbbbl)	Total Gas Reserves (MMcf)	Total BOE Reserves (Mbbbl)
Uinta-Piceance	180	254,329	7,181,669	1,451,274