



0 0.5 1 Kilometer
0 0.5 1 Mile



Maintained trail



Trail in tunnel or cave



Private Campground



Ranger station



Unmaintained trail



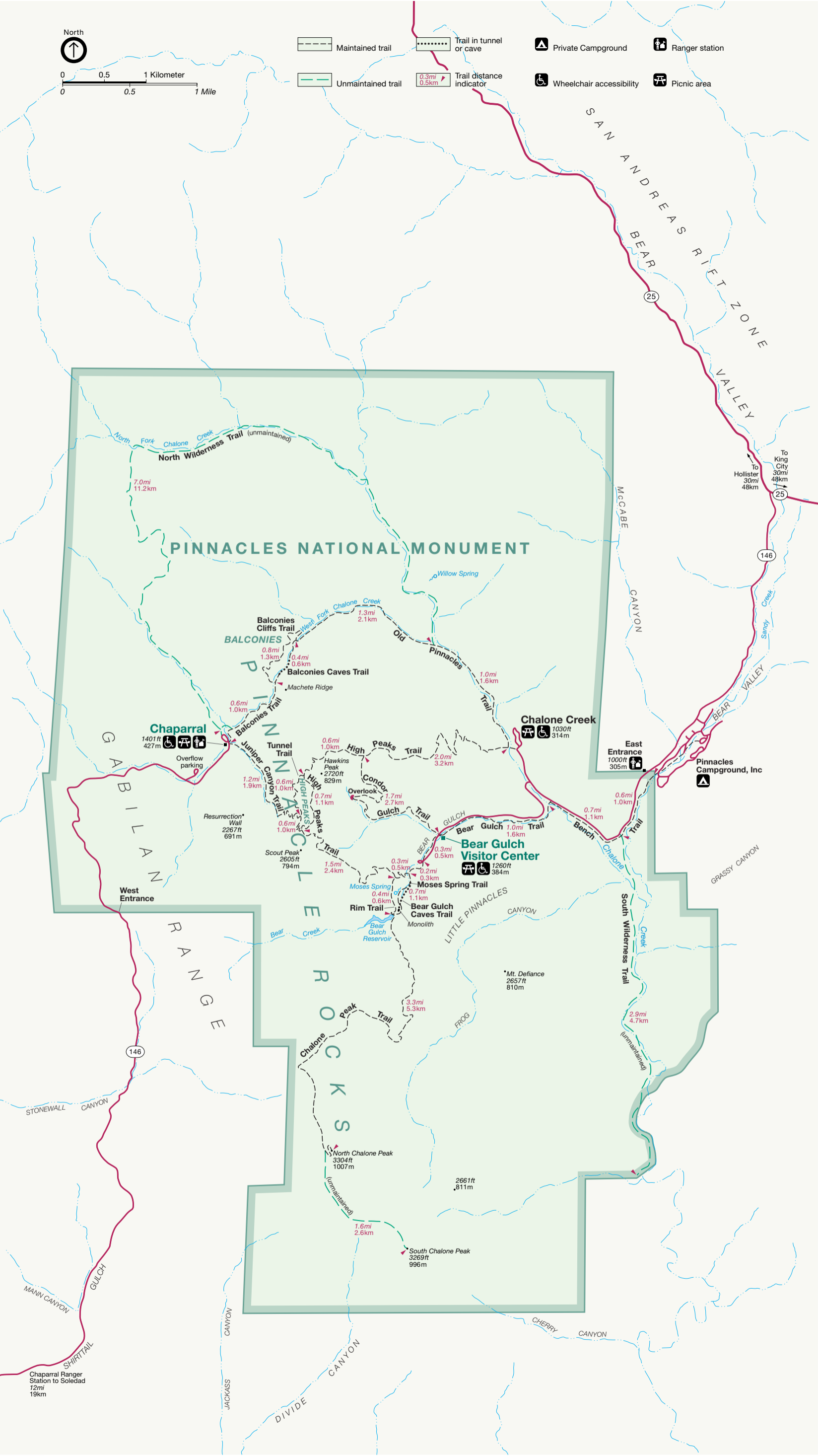
Trail distance indicator



Wheelchair accessibility



Picnic area



PINNACLES NATIONAL MONUMENT

Chaparral
1401ft
427m

Chalone Creek
1030ft
314m

Bear Gulch Visitor Center
1260ft
384m

*Mt. Defiance
2657ft
810m

Chaparral Ranger Station to Soledad
12mi
19km

To King City 30mi
48km
To Hollister 30mi
48km