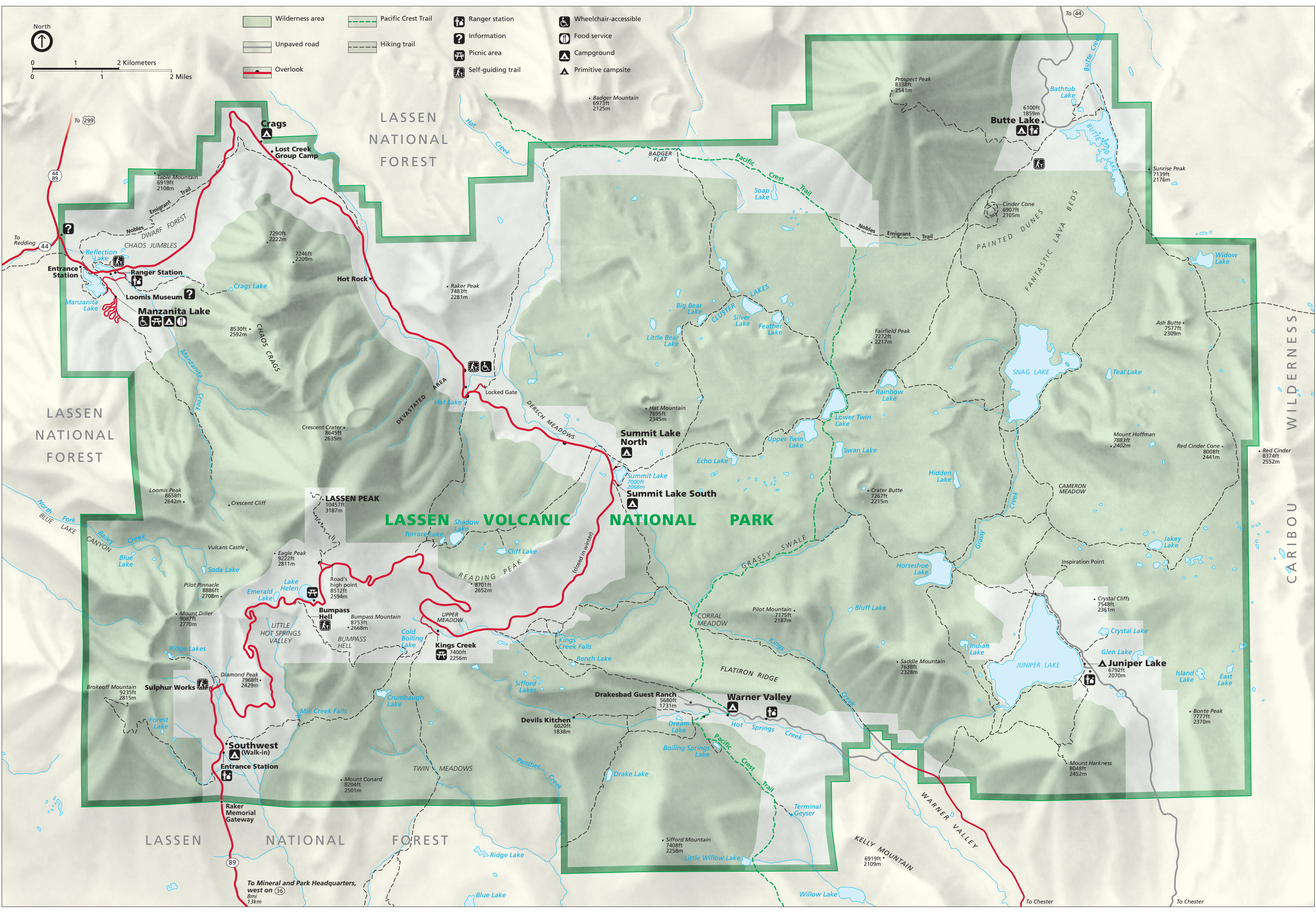


- Wilderness area
- Pacific Crest Trail
- Ranger station
- Wheelchair-accessible
- Unpaved road
- Hiking trail
- Information
- Food service
- Picnic area
- Campground
- Self-guiding trail
- Primitive campsite
- Overlook



To Mineral and Park Headquarters,
west on (36)
8mi
13km

To Chester

To Chester